



SEACHROME

 SIGNATURE



SIGNATURE

At Seachrome, we've devoted over fifty years to producing comfortable, durable, safe and stylish bath products of the highest quality and value. Our all-American approach to innovation in design and excellence in service and production means our work exceeds the standards set for bath products that serve special health needs. Seachrome understands the long-term impact of an environmentally-conscious approach to manufacturing, so we use recycled materials whenever possible and ensure our finished products are fully recyclable and LEED compliant.





Satin stainless finish

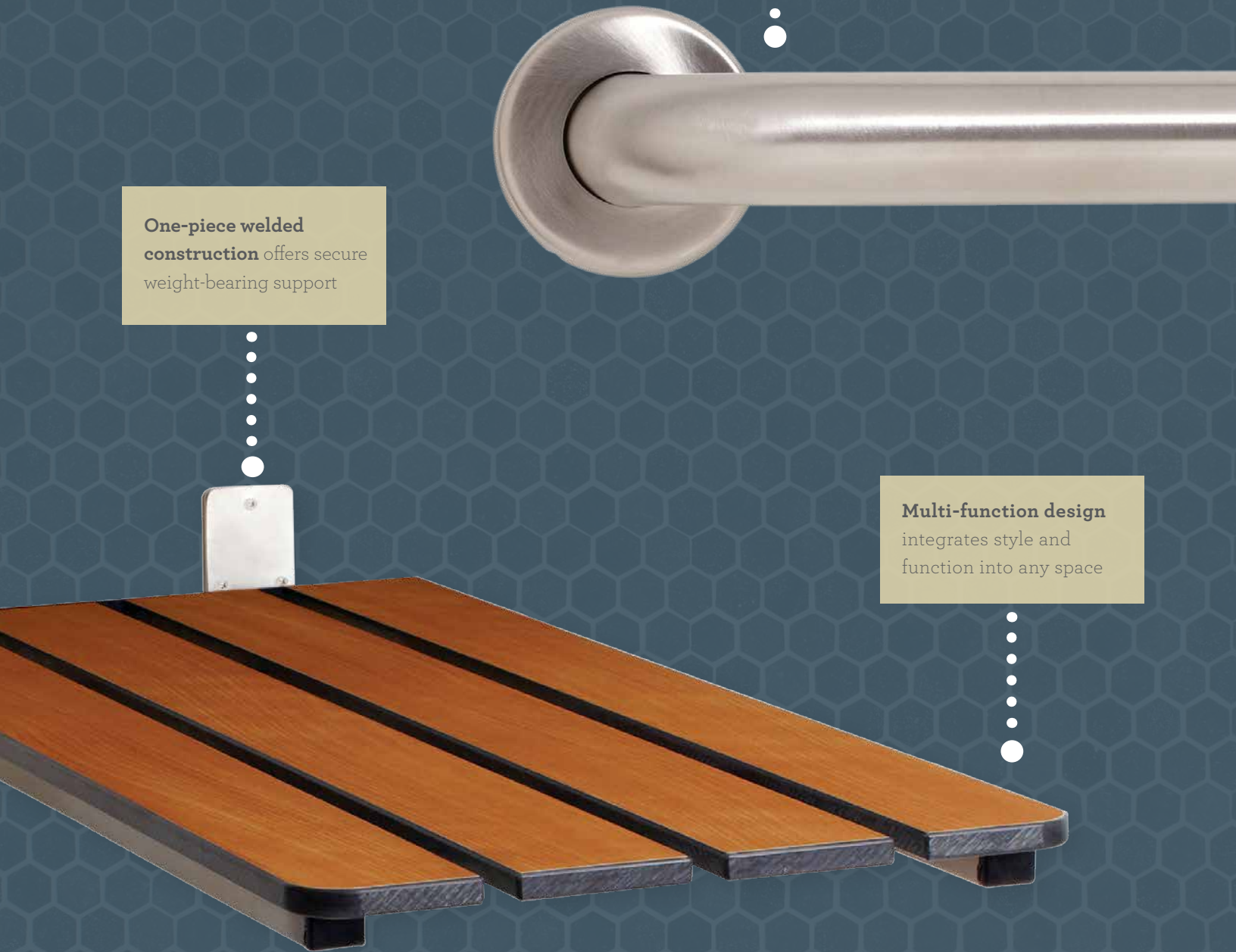
ensures lasting wear with elegant appeal

One-piece welded construction

offers secure weight-bearing support

Multi-function design

integrates style and function into any space





SUPPORTING YOU WITH STYLE, COMFORT AND STRENGTH

We design our tub/shower seats and grab bars with an eclectic range of sturdy, long-lasting and beautiful materials. From our classic #304 stainless steel to the finest quality phenolic white, teak, HDPE, padded naugahyde, and new solid-surface materials in our seat tops, Seachrome's Signature line offers comfort, style and strength. Our expertise in the guidelines set by the Americans with Disabilities Act is incorporated into the entire Signature product line assuring safety and security, with our made-in-the-USA pride in every product.



STANDARD GRAB BAR

GSS SERIES

INSTITUTIONAL GRAB BAR

GSSI SERIES

GSSI SERIES TOP VIEW

WALL FLANGES

Mounting flanges are constructed of #304 (18-8) stainless steel, heliarc-welded to the bar to form a single structural unit. Flanges are available in the following styles:

EXPOSED SCREW FLANGES

- ER** 14 ga. (2.0mm) x 3" (76mm) dia. on 1-1/4" bars;
12 ga. (2.8mm) x 3" (76mm) dia. on 1-1/2" bars
- EW** 10 ga. (3.6mm) x 3" (76mm) dia.

CONCEALED SCREW FLANGES

- CR** 14 ga. (2.0mm) x 3" (76mm) dia. welded on 1-1/4" bars or 1-1/2" bars concealed by a 22 ga. (0.8mm) x 3-1/8" (79mm) dia. "snap on" cover.
- CB** 14 ga. (2.0mm) x 3" (76mm) dia. bolted on 1-1/4" bars or 1-1/2" bars concealed by a 22 ga. (0.8mm) x 3-1/8" (79mm) dia. "snap-on" cover.

LOAD BEARING AND INSTALLATION

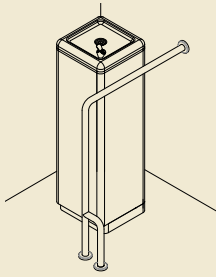
All Seachrome close-clearance, wall-mounted straight bars have been designed and manufactured to support loads in excess of all applicable federal load specifications when properly installed. The actual "in use" load bearing capacity of any grab bar, however, will be limited by the strength of its mounting surface and installation hardware.

Seachrome recommends that grab bars be installed using 2" minimum thickness "in wall" solid wood backing material with #10 x 2" stainless steel, Phillips head, sheet metal screws, or using a wall embedded minimum 12 ga.(2.8mm) steel anchor plate with #10-24 stainless steel machine screws. When mounting on toilet partitions, Seachrome recommends the use of 3" (76mm) dia., 16 ga. (1.6mm), stainless steel, "through-wall" anchor disks. Please contact the factory for further mounting recommendations.

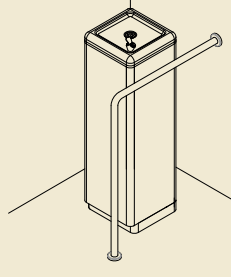
Under no circumstances should any grab bar be mounted to drywall, sheetrock, plaster, fiberglass, acrylic or other similar "hollow" wall surfaces without appropriate wood or steel backing material.

SIGNATURE GRAB BARS

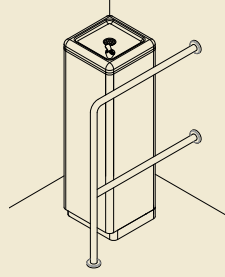
Grab Bar Configuration Options



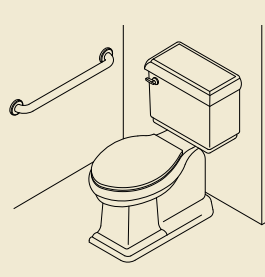
WALL TO FLOOR BAR
WITH SIDE LEG
GSW-LR SERIES



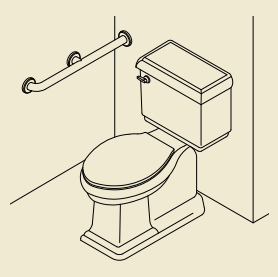
WALL TO FLOOR BAR
GSW SERIES



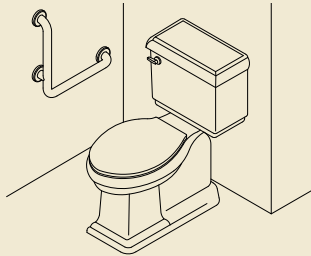
WALL TO FLOOR
DRINKING
FOUNTAIN BAR
GSD SERIES



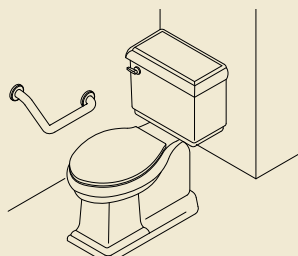
STRAIGHT BAR
GSS SERIES



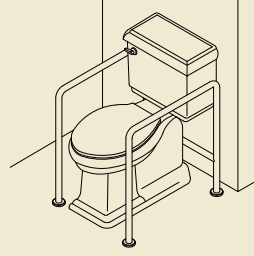
STRAIGHT BAR WITH
MIDDLE SUPPORT
GSM1 SERIES



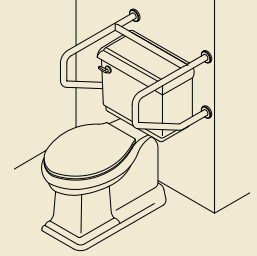
VERTICAL ANGLE BAR
GSV SERIES



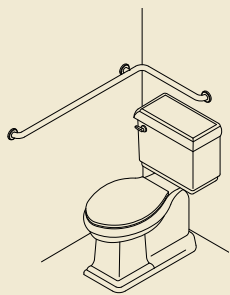
BOOMERANG BAR
GSB SERIES



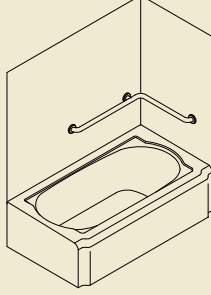
FLOOR TO FLOOR
STRADDLE BAR
GSFS SERIES



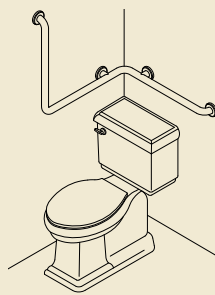
WALL TO WALL
STRADDLE BAR
GSWW SERIES



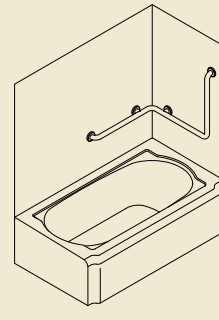
TUB SHOWER BAR
(REVERSIBLE)
GST SERIES



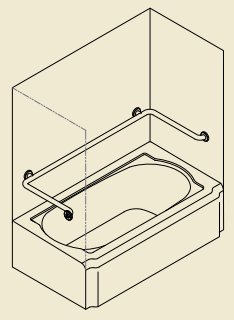
TUB SHOWER BAR
(REVERSIBLE)
GST SERIES



2-WAY TUB SHOWER BAR
GSTL/GSTR SERIES
(LEFT-HAND SHOWN)

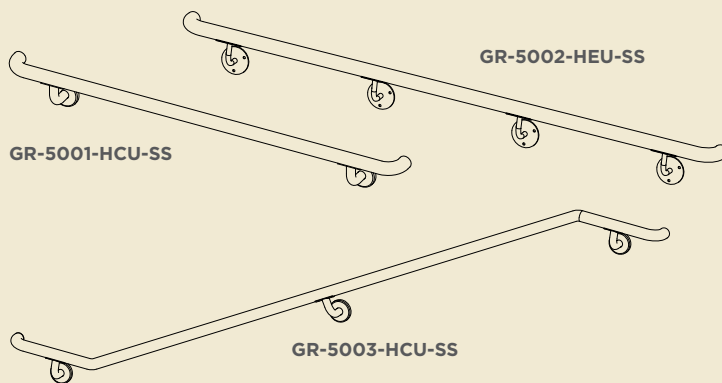


2-WAY TUB SHOWER BAR
GSTL/GSTR SERIES
(RIGHT-HAND SHOWN)

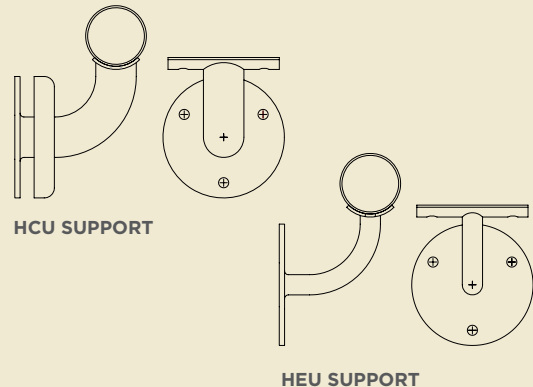


U-SHAPED BAR
GSU SERIES

Hand Rail Configuration Options



Under Slung Supports



GRAB BAR COLORS AND FINISHES



TUB AND SHOWER SEATS



BENCH SEAT

SSB-180150-PWS

Convenient bench seat provides solid support and easily folds up against wall when not in use.
LENGTH: 18" | DEPTH: 15"



BENCH SEAT

SSB-320150-SAPS

This custom bench seat offers our new Aspen Putty solid surface top with custom wave slots for drainage. Folds up easily against the wall when not in use.
LENGTH: 32" | DEPTH: 15"



TRANSFER SEAT

SSL-320225-HW

This one-piece L-shaped transfer seat comes in durable high-density polyethylene (HDPE). Available in white only.
LENGTH: 32" | DEPTH: 22.5"



TRANSFER SEAT

SSL-320225-SPB

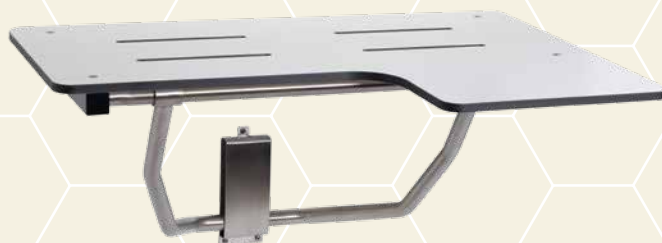
An L-shaped transfer seat with a left-hand return that folds up when not in use. Shown in our new solid-surface Basalt seat top with slats.
LENGTH: 32" | DEPTH: 22.5"



TRANSFER SEAT (RIGHT HAND SHOWN)

SSR-320225-PT

An L-shaped transfer seat with a right-hand orientation. Shown in elegant phenolic teak with slats.
LENGTH: 32" | DEPTH: 22.5"



REVERSIBLE TRANSFER SEAT

(LEFT HAND SHOWN)

SLR-320225-PWS

This solid, one-piece transfer seat offers bathing security with a left or right-hand orientation. Solid phenolic top in white or teak slotted for drainage. Nylock mounting system for easy, secure attachment.
LENGTH: 32" | DEPTH: 22.5"

SOLID SURFACE COLORS



Frost



Sanded Cream



Gold



Aspen Putty



Copper



Basalt



Tempest Zenith



Quarry Palisade



Coffee Bean



Ebony

Seachrome seats meet Federal Spec. WW-P-541/8b and ANSI 117.1. When properly installed, all seats exceed applicable federal load specifications. These models have been independently tested to withstand 1,000 lbs in a 30-minute static load test.

 SIGNATURE



COMPACT FOLDING SHOWER SEAT

SSL-260225-NW

Left-hand transfer seat with padded naugahyde (white or almond) seat top.
LENGTH: 26" | DEPTH: 22.5"



BENCH SEAT WITH SWING DOWN LEGS

SSB2-240150-SPE

This securely designed seat features a #304 stainless steel frame with swing-down legs and a variety of elegant seat options including the slatted solid surface top in Ebony shown here.
LENGTH: 24" | DEPTH: 15"



PORTABLE TUB SEAT

STPA-265160-PWS

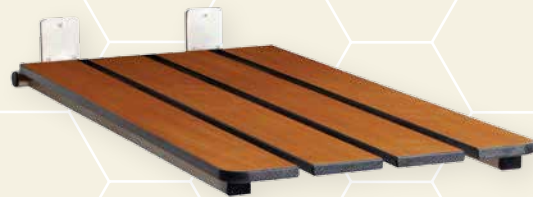
This convenient portable seat with adjustable leveling feet locks on to the tub apron to create solid support. Legs fold up for easy storage and portability. One-piece white phenolic surface.
LENGTH: 26.5" | DEPTH: 16"



REAR MOUNT FOLD-UP TUB BENCH SEAT

STR-290165-PTS

Sleekly-designed rear-hung, folding tub seat rests on tub ledges in the down position, enhancing support. One-piece, frameless phenolic material with smooth, rounded edges. Shown in phenolic teak.
WIDTH: 29" | DEPTH: 16.5"



END MOUNT TUB SEAT

STE-290160-PT

The stainless steel frame of this end-mounted tub seat supports a durable 1/2" phenolic top that is waterproof, stain resistant and easy to clean. Shown here with slats but also available in a solid one-piece seat top.
LENGTH: 29" | WIDTH: 16"

Seachrome specializes in custom sizes, configurations, and finishes. Call us at **800-955-2476** for technical assistance and competitive price quotes.

STANDARD SEAT MATERIALS KEY

NW: White naugahyde covering 2" (51mm) thick foam, mounted on 1/2" (13mm) thick marine plywood.

PW or PT: Phenolic (white or teak) 1/2" (13mm) thick x 3" (76mm) wide slats bolted to frame with countersunk stainless steel screws.

PWS or PTS: Phenolic white solid/phenolic teak solid 1/2" thick single piece seat top with slots for drainage.

HDPE: High density polyethylene 1/2" thick one piece white.

SS: 1/2" thick solid surface material available in a variety of color patterns.



SHOWER SEATS

Seachrome seats meet Federal Spec. WW-P-541/8b and ANSI 117.1. When properly installed, all seats exceed applicable federal load specifications. These models have been independently tested to withstand 1,000 lbs in a 30-minute static load test.



TRANSFER SEAT WITH SWING DOWN LEGS (RIGHT HAND SHOWN)

SSR2-320225-SPGS

Sturdy, water-resistant seat provides secure stainless steel support with swing-down legs and adjustable leveling feet and left or right-hand options in 10 different color patterns.

LENGTH: 32" | DEPTH: 22.5"



REVERSIBLE SEAT WITH SWING DOWN LEGS

SLR2-320225-PWS

This L-shaped reversible seat design allows for on-the-job assembly in either left or right-hand configuration.

LENGTH: 32" | DEPTH: 22.5"

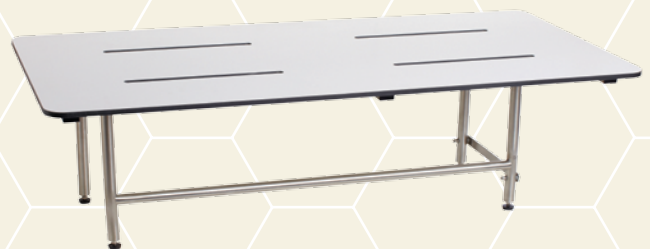


TRANSFER SEAT WITH SWING DOWN LEGS (LEFT HAND SHOWN)

SSL2-320225-PWS

A sturdy L-shaped, slotted seat featuring secure stainless steel swing-down legs.

LENGTH: 32" | DEPTH: 22.5"



BENCH SEAT WITH SWING DOWN LEGS

SSB2-480240-PWS

Our custom wall-mounted bench seat with swing-down legs meets all federal specifications.

LENGTH: 48" | DEPTH: 24"



STAINLESS STEEL TRANSFER SEAT

SRDY-320225-SS

This L-shaped transfer seat is fabricated using 100% #304 stainless steel with dual yokes for superior strength. Left and right-hand models meet all federal specifications for institutional applications.

LENGTH: 32" | DEPTH: 22.5"



BARIATRIC SEAT

SBB3-360180-PWS

Designed specifically for bariatric needs, this seat's wall-mounted frame and 3" padded stainless steel leveling feet are engineered to withstand up to 1500 lbs/f. Solid phenolic seat top is slotted for drainage. Also available in phenolic teak.

LENGTH: 36" | DEPTH: 18"

ACCESSORIES

SIGNATURE



SCM-R5506HD
Clothes Line



SCM-R5520SS
Wall Tissue Box Holder



SCAL-126
Vertical Wall Soap
Dispenser (40oz)



SCAL-124
Horizontal Wall Soap
Dispenser (40oz)



SCM-5571
Recessed Extra Roll
Tissue Holder



SCM-5577
Recessed Double
Tissue Holder



SCM-R5580
Surface Mounted
Double Tissue Holder



SCAL-128
Deck Mounted Soap
Dispenser Available in 4 or
6" Pumps (4" Shown)



SCAL-170
Sanitary Napkin Holder



SCAL-162
Wall Mounted C-fold
Tissue Paper Dispenser



SCAL-130
Recessed or Wall Mounted
Toilet Seat Cover Dispenser



15820-24
Towel Shelf with Towel Bar



15840-30-SS
Coat Rack with Shelf

For more information or to
find a distributor near you,
please contact us.

SEACHROME

1906 E. DOMINGUEZ ST. LONG BEACH, CA 90810
800-955-2476 WWW.SEACHROME.COM

