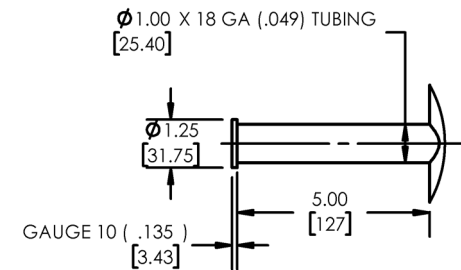
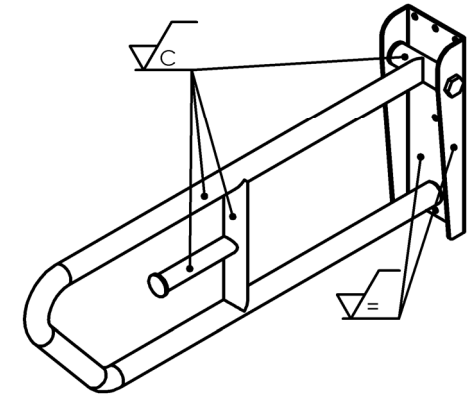
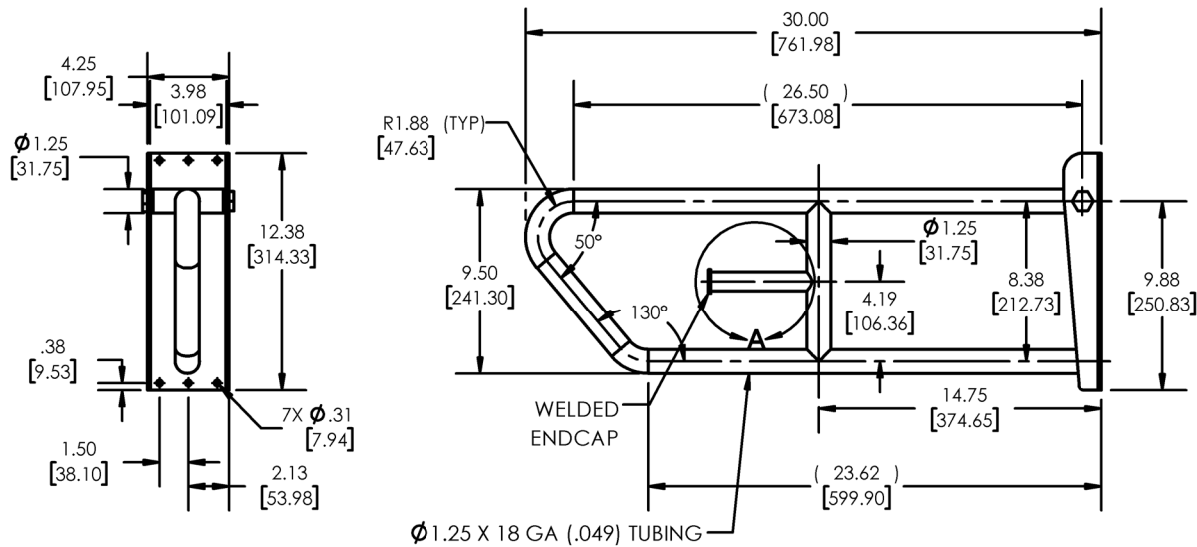


**NOTES: UNLESS OTHERWISE SPECIFIED**

1. DIMENSIONS IN BRACKETS [ ] ARE MILLIMETERS, FOR REFERENCE ONLY.
2. GRAIN DIRECTION PER ASME Y14.36M-1996 FOR SS SATIN FINISHES ONLY.

**CUSTOMER SPECIFICATION  
DRAWING**

REVISIONS			
REV.	DESCRIPTION	DATE	APPROVED
-	RELEASED		



DETAIL A  
SCALE 1 : 5

**PRODUCT SPECIFICATION**

- CLIENT:
- MATERIAL: AISI 304
- FINISH: SATIN STAINLESS STEEL

- HARDWARE PACKAGE INCLUDES:**
1. (7) #14 X 2" PHILLIPS PAN HEAD SHEET METAL SCREW

**PROPRIETARY AND CONFIDENTIAL**  
THIS DRAWING AND THE INFORMATION CONTAINED HEREIN IS PROPERTY TO SEACHROME COR. AND SHALL NOT BE REPRODUCED, COPIED OR DISCLOSED IN WHOLE, OR PART, OR USED OF MANUFACTURING OR FOR ANY OTHER PURPOSE WITHOUT THE WRITTEN PERMISSION OF SEACHROME CORPORATION.

INTERPRET GEOMETRIC TOLERANCING PER: ASME Y14.5-2009	
UNLESS OTHERWISE SPECIFIED: DIMENSIONS ARE IN INCHES [MM]	
TOLERANCES:	DECIMALS
FRACTIONAL $\pm 1/32$	.X $\pm 0.1$
ANGLES $\pm 1^\circ$	.XX $\pm 0.06$
DRAWN T. AYALA	09/18/23
ENG APPR.	

<b>SEACHROME</b>		1906 EAST DOMINGUES LONG BEACH, CA 90810 (310) 427-8010	
CORPORATION			
TITLE:		30" SWING UP GRAB BAR WITH TOILET PAPER HOLDER	
DWG. NO.	IGW1-4130-Q-SS	REV	-
SIZE	A DO NOT SCALE DRAWING	SCALE:	1:10 SHEET 1