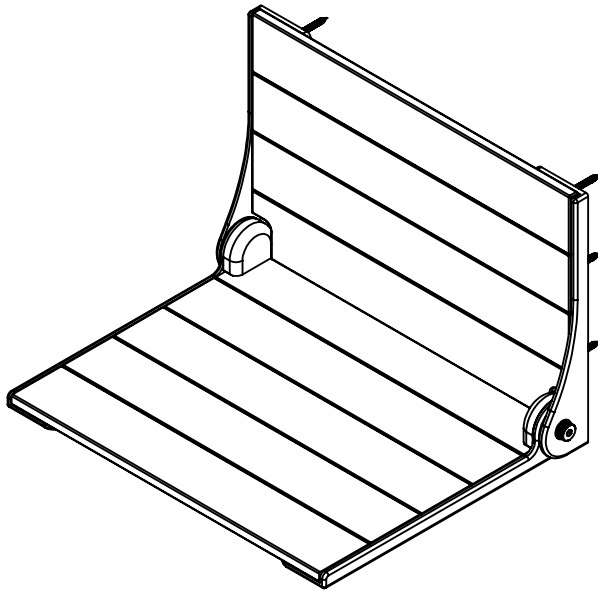
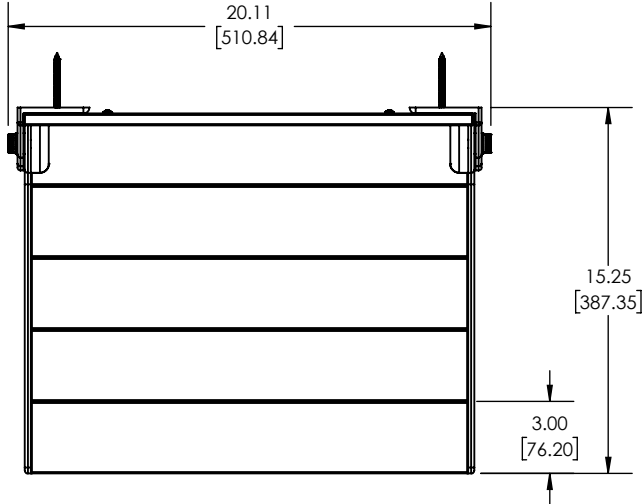


NOTES:

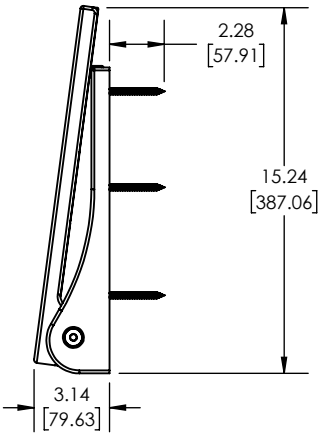
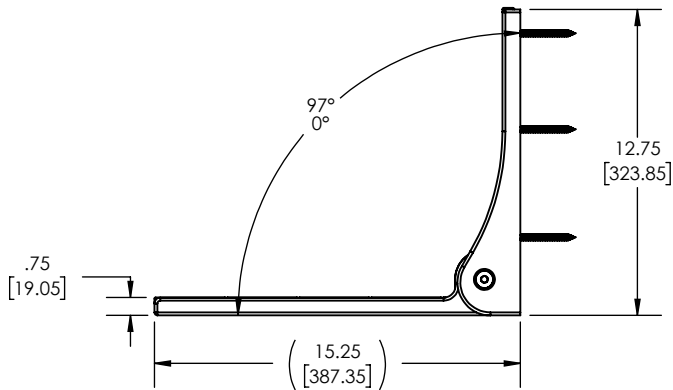
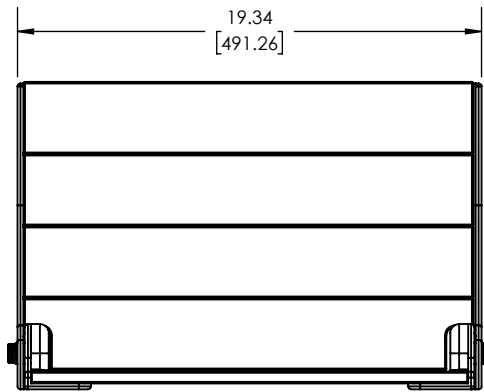
1. CAD IS MASTER. WHEN APPPLICABLE, THIS DRAWING IS TO BE USED IN CONJUNCTION WITH THE CAD MODEL FOR COMPLETE PRODUCT DEFINITION.
2. DIMENSIONS IN BRACKETS [] ARE MILLIMETERS AND FOR REFERENCE ONLY.
3. MATERIAL: 304 STAINLESS STEEL IAW ASTM A480  
AFROMOSIA WOOD

REVISIONS				
ZONE	REV.	DESCRIPTION	DATE	APPROVED
	-	RELEASED	3/24/2023	E.B



COMPLETE PART NUMBER: (EXAMPLE: SHAF-185155-TWA-MB)  
SHAF-185155-TWA-

**FINISH**  
AL = ALMOND  
BI = BISCUIT  
BK = BLACK  
BSG = BLACK SEMI-GLOSS  
BR = BRONZE  
DB = DARK BRONZE  
MB = MATTE BLACK  
MWT = MATTE WHITE  
SL = SILVER  
WT = WHITE



**HARDWARE PACKAGE INCLUDES:**  
- # 14 X 2.5 PHIL FLAT "A" 18-8 SS PN (S-4500-120456 QTY 6)

Proprietary & Confidential

This drawing and the information contained herein is the property of Seachrome Corporation and shall not be reproduced, copied, or disclosed in whole or in part, or used in manufacturing, or for any other purpose without the express written permission of Seachrome Corporation.

TESTING	
ASSEMBLY	
POLISHING	
MACHINING	

INTERPRET GEOMETRIC TOLERANCING PER: ASME Y14.5-2009  
UNLESS OTHERWISE SPECIFIED:  
DIMENSIONS ARE IN INCHES [MM]  
TOLERANCES: DECIMALS  
FRACTIONAL ± 1/8 .X ± 0.1 [2.5]  
ANGLES ± 2° .XX ± 0.06 [1.5]  
.XXX ± 0.031 [0.8]

**CC** = CRITICAL CHARACTERISTIC  
ALL THREADS = CRITICAL FEATURE

REMOVE ALL BURRS & SHARP EDGES

MATERIAL SEE NOTE

FINISH SEE NOTE

-	-	-
NEXT ASSY	USED ON	
APPLICATION		
DRAWN	E.BARBER	03/24/23
CHECKED		
ENG APPR.		
MFG APPR.		
Q.A.		
DO NOT SCALE DRAWING		

<b>SEACHROME</b>		1906 EAST DOMINGUEZ LONG BEACH, CA 90810 (510) 427-5010
CORPORATION		
TITLE: SILHOUETTE SHOWER SEAT, TEAK WOOD, AFROMOSIA		
DWG. NO.	SHAF-185155-TWA	REV -
SIZE <b>C</b>		SCALE: 1:8 SHEET 1 OF 1